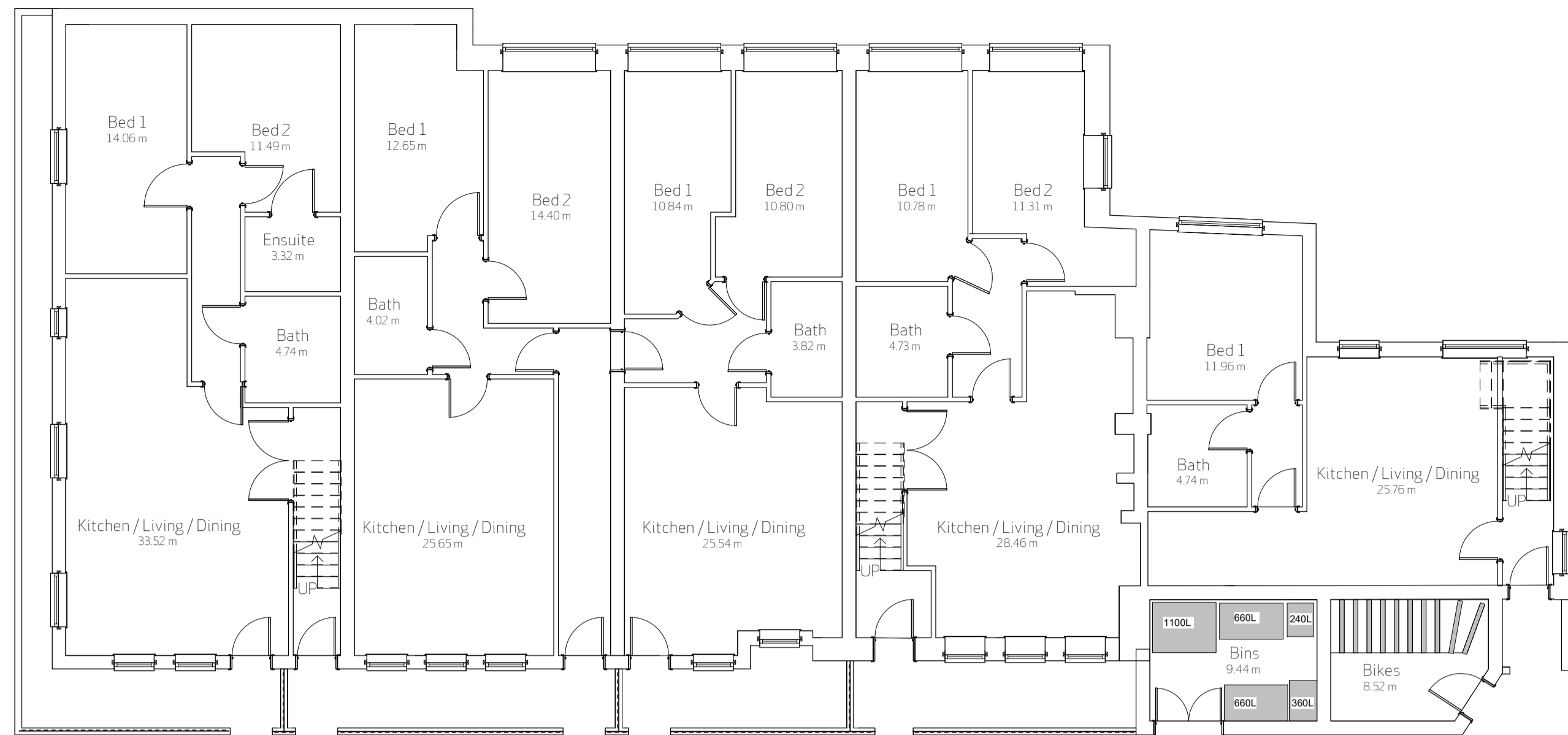
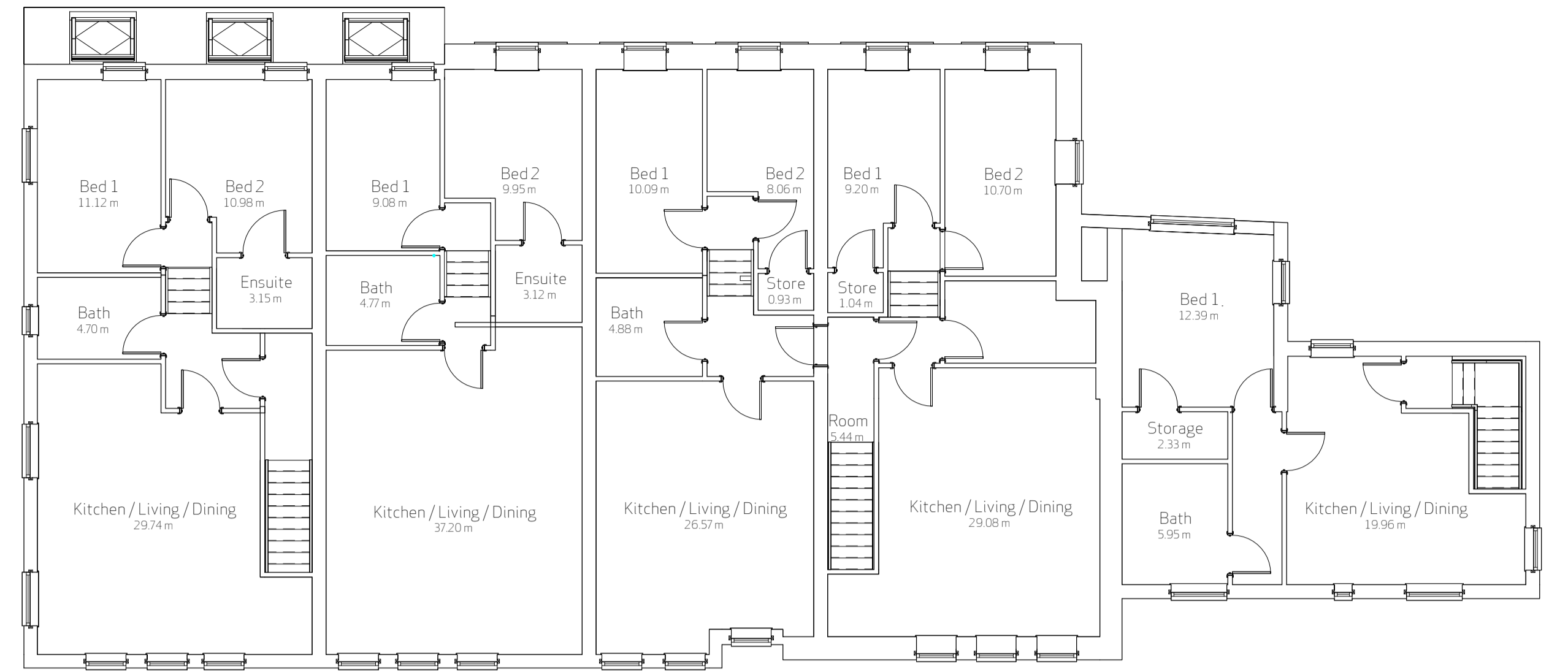


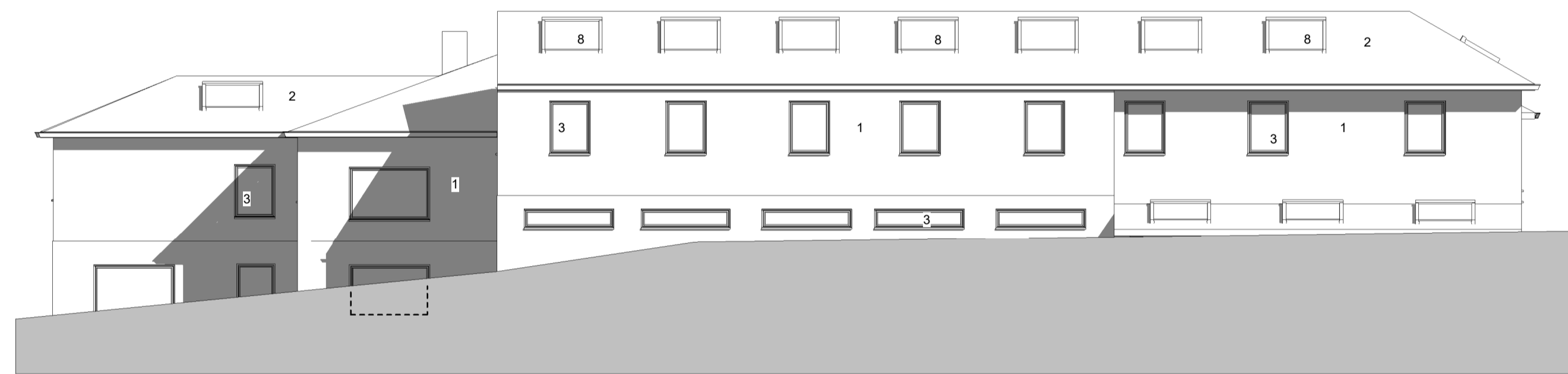
This drawing is copyright of Prichard Barnes Architects. It must not be reproduced or distributed to third parties without your permission. Use dimensioned information only. Do not scale from this drawing or use electronic information. This drawing is to be used in conjunction with the relevant consultation & feedback manufacturers' information. Any discrepancy should be reported immediately. Any unprinted information incorporated within this drawing cannot be guaranteed as accurate unless confirmed by fixed dimensions. All dimensions are in millimeters unless noted otherwise.



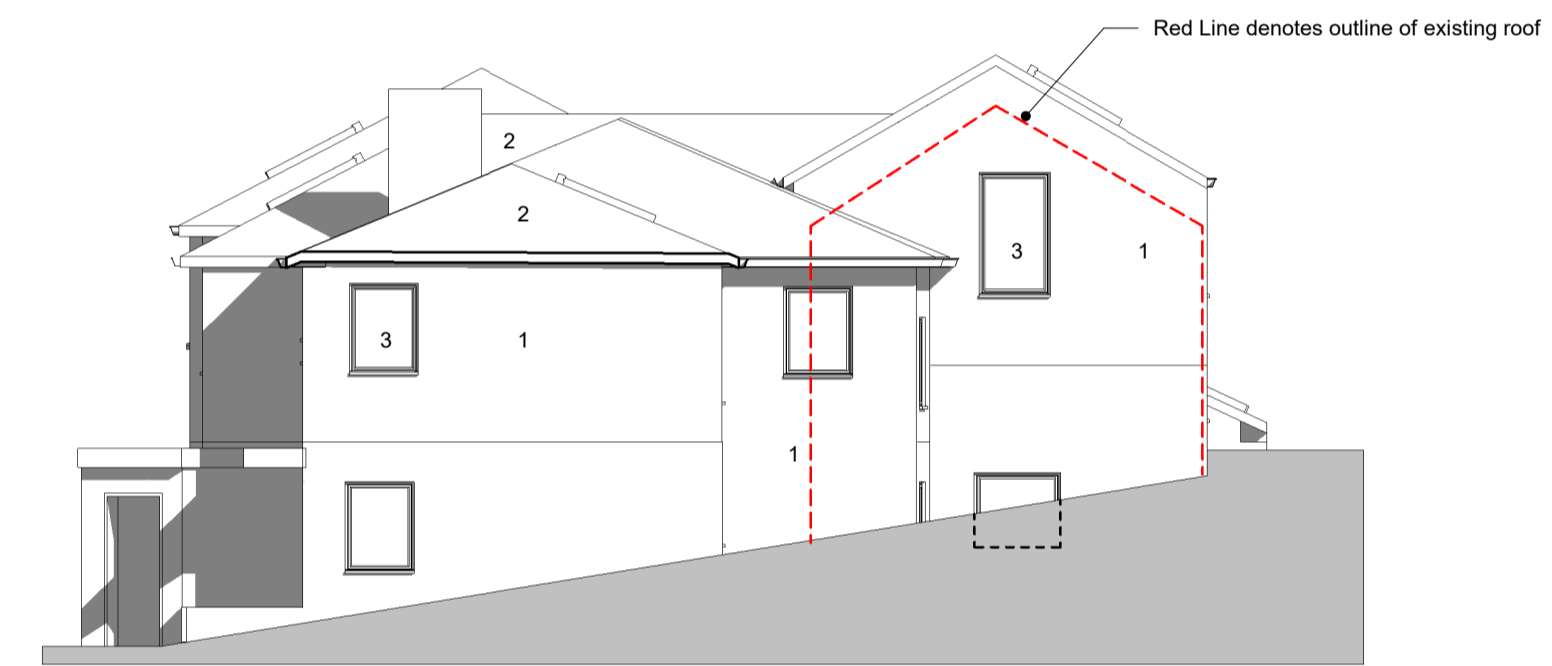
1 Ground Floor Plan as Proposed
1 : 100



2 First Floor Plan as Proposed
1 : 100



3 Southwest Elevation
1 : 100

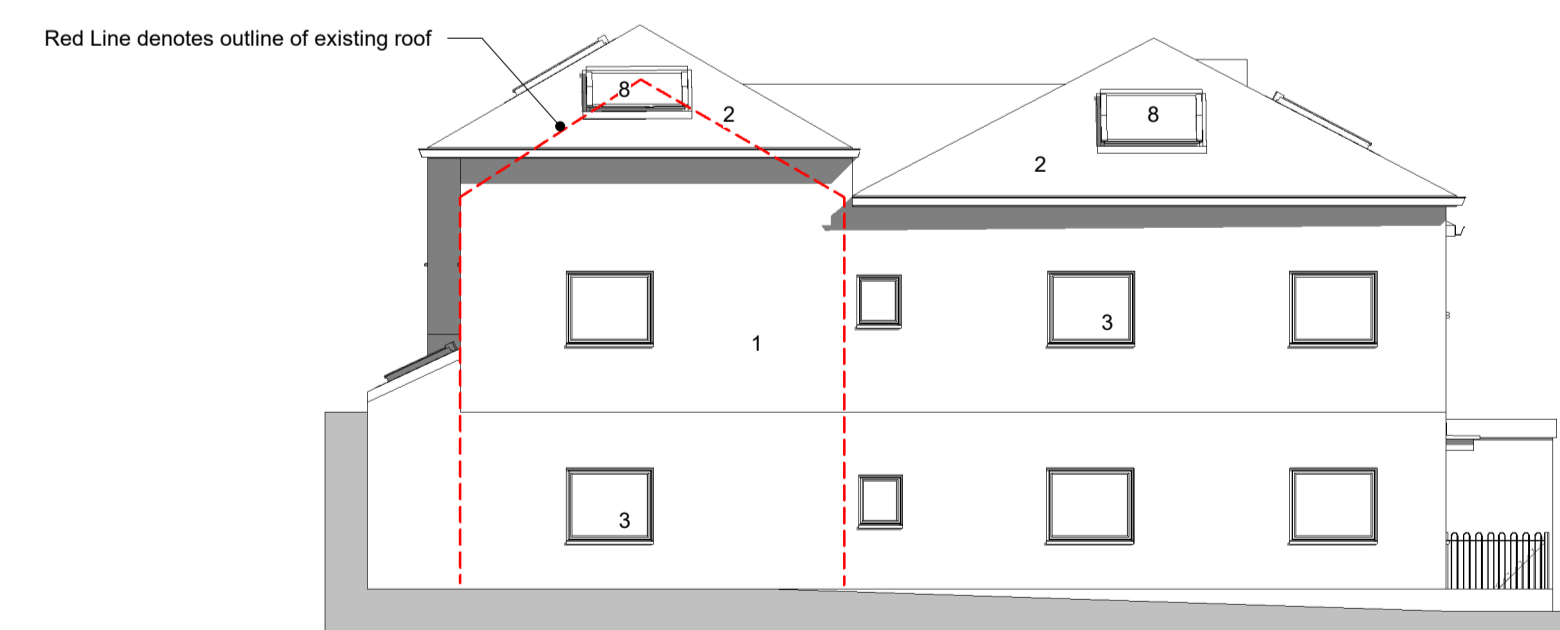


4 Northwest Elevation
1 : 100

- Material Key: -
1. White Render
 2. Reconstituted Slate
 3. Grey PPC Aluminium Windows and Doors
 4. Stone cladding
 5. Oak door
 6. Steel doors
 7. Black steel railings
 8. Aluminium rooflights



5 Northeast Elevation
1 : 100



6 Southeast Elevation
1 : 100

Rev	Date	Description	Dr	Ch
A	29/09/23	PAC ISSUE	NM	SP

Prichard Barnes Architects

Address 18 St Andrews Crescent, Cardiff CF10 3DD
Telephone 07920 057880 07495878410
Website prichardbarnes.co.uk

Client Midpoint Homes, Mr C King
Project Stuffed Dormouse Redevelopment, Caerleon

Project No 2345
Drawing Stuffed Dormouse Proposed Drawings

Issue Status Planning
A1 1 : 100
Drawing Ref

Drawing No **PL_05** Rev A